

**OUR PLANTS ARE CERTIFIED RECOGNIZED AS
BEING WORTHY OF ISO 9001 / ISO 14001 CERTIFICATION.**

Niigata plant:

Shimo Aozu, Tsubame-city, Niigata-prefecture, Japan.



**ISO 9001 : JQA-0581
ISO 14001 : JQA-EM4670**

SAFETY

- Operate safely in accordance with proper operation manual.
- To prevent trouble and accidents, perform daily and preventive maintenance checks without fail.

HOKUETSU INDUSTRIES CO., LTD.

8TH Floor Shinjuku San-Ei Bldg,
22-2 Nishi-Shinjuku 1-Chome, Shinjuku-ku,
Tokyo 160-0023 Japan
TEL : 81-3-3348-7281 FAX : 81-3-3348-7289
URL : [http : //www.airman.co.jp](http://www.airman.co.jp)

HOKUETSU INDUSTRIES EUROPE B.V.

Aalsmeerderdijk 156 unit J, 1438 AX, Oude Meer,
The Netherlands.

PHONE:31-20-6462636
FAX:31-20-6462191

DISTRIBUTOR :

**TWIN SCREW
COMPRESSOR**

AIRMAN®

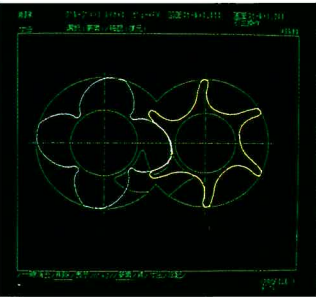
*PORTABLE
SCREW
COMPRESSOR*

PDS/SMS_{SERIES}

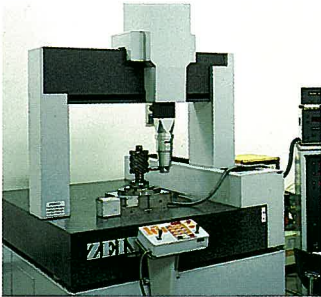
HOKUETSU INDUSTRIES CO., LTD.

NEW ASYMMETRIC ROTOR PROFILE

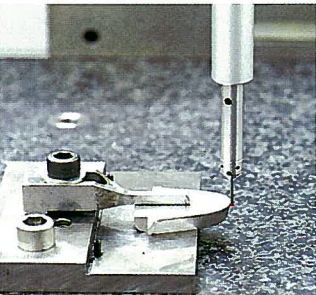
Fully Rationalized Plant



DESIGNED BY CAD



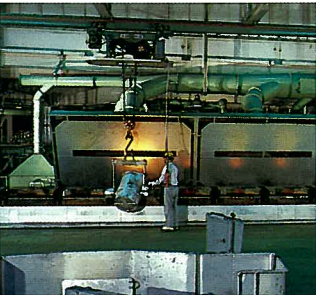
THREE DIMENSION MEASURE-
MENT



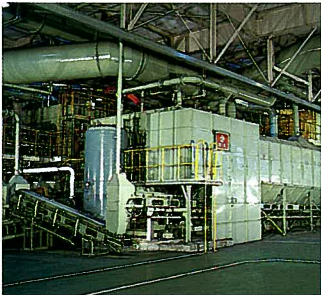
ACCURACY OF CUTTING BLADE



CHECK WITH THREE DIMENSION
MEASURING MACHINE



CLEAN FOUNDRY



AUTOMATIC SAND TREATMENT
LINE



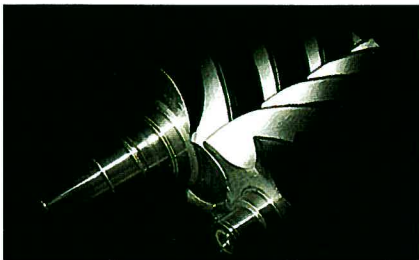
AUTOMATIC SCREW CUTTING



AUTOMATIC PROCESSING OF
SCREW CASING



OUR COMMITMENT TO QUALITY, PERFORMANCE AND DEPENDABILITY IS YOUR ASSURANCE THAT THE "AIRMAN" COMPRESSORS WILL PROVIDE YEARS OF PRODUCTIVE, TROUBLE-FREE OPERATION. THE "AIRMAN" PDS SERIES COMPRESSORS OFFER THE FOLLOWING ADVANCED FEATURES;



A UNIQUE SCREW DESIGN

Specially heat treated rotors are machined to extremely tight tolerances by utilizing the latest in computer controlled machinery.

B PRO ENVIRONMENT (NOISE)

AIRMAN compressors are designed with the environment in mind. Noise levels are way below EPA requirements and meet all EEC legislative requirements.

C PRO ENVIRONMENT (EMISSION)

The efficiency of the AIRMAN unique profile means that required engine power is extremely low resulting in less emission into the atmosphere.

D To allow the engine to warm-up under a light load AIRMAN compressors are fitted with a device which prevents pressure from building up in the receiver while maintaining the engine at idle speed.

E CAPACITY CONTROL

Automatically adjusts capacity from 0-100%. Control design eliminates engine surging by optimising engine speed at reduced capacity demands—thus reducing wear and maximising fuel efficiency.

F OPERATIONAL PANEL

The panel, fitted at the rear for added operator's protection, monitors the operations of the machine.

G SERVICEABILITY

To minimize service time AIRMAN compressors are fitted with wide opening doors which provide total access for servicing and routine maintenance. To further simplify servicing, all drainage points are fitted with valves, and are piped to the outside of the unit. The fuel system of all models (except PDSF830) is equipped with an automatic air bleeder.

H TOUGH METAL CONSTRUCTION

Pre-painting of the full chassis and body-work prior to assembly with an electrostatic process ensures a tough quality finish and eliminates unpainted, rust prone metal to metal contact areas.

I SHUTDOWN & PROTECTION SYSTEM

AIRMAN compressors are constantly monitored and protected against high air discharge, high-coolant temperature, low engine oil pressure and other functions are also monitored. (for all models except upto PDS125S).

J OPERATOR PROTECTION

Fan belt covers and an over-pressure relief valve are provided to offer additional operator protection.



PORTABLE SERIES

■MANY YEARS OF PROVEN RELIABILITY AND PERFORMANCE OF THE WORK - SIDE.



PDS185S



PDS265S

■ LIGHT WEIGHT & COMPACT
PRO ENVIRONMENT
LOW NOISE
LOW EMISSION
EXCELLENT FUEL CONSUMPTION

■AVAILABLE IN A WIDE RANGE OF MODELS TO MEET ANY NEED, AND BASED ON HOKUETSU'S ADVANCED TECHNOLOGY AND EXPERIENCE.



PDS390S



PDS655S

■EASY OPERATION & SERVICE
HEAVY –DUTY CONSTRUCTION
FULL MONITORING SYSTEM

PDS SERIES SPECIFICATIONS

Model		PDS130S -6B4	PDS185S -6C2	PDS265S -4B2
COMPRESSOR	Type	Rotary Twin Screw, Single-Stage, Oil-cooled		
	Free Air Delivery m³/min	3.7	5.0	7.5
	Rated Operating Pressure kg/cm²(PSIG)(kPa)	7.1(102)(700)	7(100)(690)	7(100)(690)
	Receiver Tank Capacity m³(US gal)	0.03(7.8)	0.02(5.3)	0.069(18.2)
	Air Outlets	20A(3/4")×2pcs	20A(3/4")×2pcs	50A(2")×1pc, 20A(3/4")×4pcs
ENGINE	Make/Model	IHI SHIBAURA N843L	YANMAR 4TNV88-BDHKS	YANMAR 4TNV98T-NHK
	Type	4 cycle, water cooled, swirl-chamber type		4 cycle, water cooled, direct injection type w/turbo charger
	No. of Cylinder	3	4	4
	Total Displacement cc	1,662	2,189	3,318
	Rated Output ps(kW)/rpm	38(28)/3,000	49.5(36.4)/3,000	83.2(61.2)/2,500
DIMENSION & WEIGHT	Fuel Tank Capacity Liters(US gal)	70(18.5)	90(23.8)	115(30.4)
	Lubrication Oil Capacity Liters(US gal)	6(1.6)	7.4(2.0)	10.5(2.8)
	Overall Length mm(inch)	2,470(97.2)	2,960(117)	2,980(117.3)
	Overall Width mm(inch)	1,510(59.4)	1,650(65)	1,630(64.2)
	Overall Height mm(inch)	1,360(53.5)	1,430(56.3)	1,715(67.5)
Tyre Size	Weight(Dry) kg(lb)	880(1,940)	860(1,896)	1,320(2,910)
	Weight(Wet) kg(lb)	960(2,116)	960(2,116)	1,460(3,219)
	Tyre Size	5.00-10 6PR×2W	175R13 8PR×2W	6.50-14 8PR×2W

- A non-silenced type is available.
- The parking brake is included as standard equipment on larger units, such as the PDS655S—PDS750S. and is optional on smaller models. An overrun brake and mudguard are available as option.

PDS390S -4B1	PDS655S -4B2	PDS750S -4B1
Rotary Twin Screw, Single-Stage, Oil-cooled		
11.0	18.5	21.2
7.1(102)(700)	7.1(102)(700)	7.1(102)(700)
0.098(25.9)	0.189(50)	0.189(50)
50A(2")×1pc, 20A(3/4")×4pcs	50A(2")×1pc, 20A(3/4")×2pcs, 10A×1pc	50A(2")×1pc, 20A(3/4")×2pcs, 10A×1pc
ISUZU DD-4BG1T	HINO JO8C-V	HINO JO8C-UT
4 cycle, water cooled, direct injection type w/turbo charger	4 cycle, water cooled, direct injection type	4 cycle, water cooled, direct injection type w/turbo charger
4	6	6
4,329	7,961	7,961
110(80.9)/2,400	160(118)/2,500	196(144.5)/2,100
180(47.6)	270(71.3)	310(81.9)
13(3.4)	23(6.1)	23(6.1)
3,810(150)	3,650(143.7)	3,650(143.7)
1,800(55.1)	1,685(66.3)	1,685(66.3)
1,780(70.1)	2,070(81.5)	2,070(81.5)
1,825(4,023)	2,885(6,360)	2,985(6,581)
2,040(4,497)	3,225(7,110)	3,335(7,352)
6.50-14 8PR×2W	6.50-14 8PR×4W	6.50-14 8PR×4W

● Specifications are subject to change without notice.

HIGH PRESSURE SERIES

■DISPLAYING EXCELLENT PERFORMANCE IN MORTAR SPRAYING,
WELL DRILLING AND NATURAL RESOURCES EXPLORATIONS.



PDSF530S



PDSF920S/G850S



PDSG750S



PDSJ750S

HIGH PRESSURE SERIES SPECIFICATIONS

Model		PDSE900S -4B1	PDS390S -4B1F	PDSF530S -4B2	PDSF830S -4B1	PDSG460S -4B2
COMPRESSOR	Type	Rotary Twin Screw, Single-Stage, Oil-cooled				
	Free Air Delivery m³/min	25.0	8.9	15.0	23.5	12.5
	Rated Operating Pressure kg/cm²(PSIG)(kPa)	8.8(125)(863)	10.5(150)(1,030)	10.7(152)(1,050)	10.3(150)(1,030)	13(185)(1,275)
	Receiver Tank Capacity m³(US gal)	0.248(65.7)	0.098(25.9)	0.189(50)	0.248(65.7)	0.189(50)
	Air Outlets	50A×2pcs, 20A×1pc	50A×1pc, 20A×4pcs	50A×1pc, 20A×2pcs, 10A×1pc	50A×2pcs, 20A×1pc	50A×1pc, 20A×2pcs, 10A×1pc
ENGINE	Make/Model	MITSUBISHI 6D24-TE1	ISUZU DD-4BG1T	HINO JO8C-V	MITSUBISHI 6D24-TE1	HINO JO8C-V
	Type	4 cycle, water cooled, direct injection type w/turbo charger		4 cycle, water cooled, direct injection type	4 cycle, water cooled, direct injection type w/turbo charger	4 cycle, water cooled, direct injection type
	No. of Cylinder	6	4	6	6	6
	Total Displacement cc	11,940	4,329	7,961	11,940	7,961
	Rated Output ps(kW)/rpm	280(206)/2,200	110(80.9)/2,400	160(118)/2,500	280(206)/2,200	160(118)/2,500
DIMENSION & WEIGHT	Fuel Tank Capacity Liters(US gal)	400(105.7)	182(48.1)	270(71.3)	400(105.7)	270(71.3)
	Lubrication Oil Capacity Liters(US gal)	45(11.9)	13(3.4)	23(6.1)	45(11.9)	23(6.1)
	Overall Length mm(inch)	4,000(157.5)	3,810(150)	3,650(143.7)	4,000(157.5)	3,650(143.7)
	Overall Width mm(inch)	1,900(74.8)	1,800(55.1)	1,685(66.3)	1,900(74.8)	1,685(66.3)
	Overall Height mm(inch)	2,150(84.6)	1,780(70.1)	2,070(81.5)	2,150(84.6)	2,070(81.5)
DIMENSION & WEIGHT	Weight(Dry) kg(lb)	4,100(9,039)	1,820(4,012)	2,890(6,371)	4,100(9,039)	2,890(6,371)
	Weight(Wet) kg(lb)	4,600(10,141)	2,040(4,497)	3,230(7,120)	4,600(10,141)	3,230(7,120)
	Tyre Size	6.50-14 8PR×4W	6.50-14 8PR×2W	6.50-14 8PR×4W	6.50-14 8PR×4W	6.50-14 8PR×4W

● The parking brake is included as standard equipment except model PDS390S. An overrun brake is available as option.

PDSG750S -4B1	PDSF920S/G820S -4B1	PDSG1300S -5B1	PDSH850S -4B2	PDSJ750S -4B2	PDSH850S/J750S -4B1	PDSK900S -422
Rotary Twin Screw, Single-Stage, Oil-cooled			Rotary Twin Screw, Two-Stage, Oil-cooled			
21.2	25.7/23.2	36.0	24.0	21.2	24/21.2	25.5
13(185)(1,275)	10.3/13 (150/185)(1,030/1,275)	13(185)(1,275)	17.5(250)(1,715)	21.2(300)(2,070)	17.5/21.1 (250/300)(1,715/2,070)	24.6(350)(2,410)
0.248(65.7)	0.258(68.2)	0.532(140.7)	0.168(44.4)	0.168(44.4)	0.168(44.4)	0.219(57.9)
50A×2pc, 20A×1pcs	50A×1pc, 20A×1pc	80A×1pc	50A×1pc, 20A×1pc	50A×1pc, 20A×1pc	50A×1pc, 20A×1pc	50A×1pc, 20A×1pc
MITSUBISHI 6D24-TE1	MITSUBISHI 6D24-TLE2A	MITSUBISHI S6B3-PTA	MITSUBISHI 6D24-TC	MITSUBISHI 6D24-TC	MITSUBISHI 6D24-TLE2A	MITSUBISHI S6B3-PTA
4 cycle, water cooled, direct injection type turbo-charged	4 cycle, water cooled, direct injection type w/turbo-charged with after-cooler					
6	6	6	6	6	6	6
11,940	11,940	14,600	11,940	11,940	11,940	14,600
280(206)/2,200	324/320(238/235)/2,200/2,000	465(342)/1,800	310(228)/2,200	310(228)/2,200	324/320(238/235)/2,200/2,000	445(327.3)/1,800
400(105.7)	555(146.6)	700(184.9)	555(146.6)	555(146.6)	555(146.6)	610(161.2)
45(11.9)	49(12.9)	80(21.1)	49(12.9)	49(12.9)	49(12.9)	85(22.5)
4,000(157.5)	4,350(171.3)	4,650(183.1)	4,350(171.3)	4,350(171.3)	4,350(171.3)	4,350(171.3)
1,900(74.8)	2,000(78.7)	1,870(73.6)	1,900(74.8)	1,900(74.8)	2,000(78.7)	2,100(82.7)
2,150(84.6)	2,445(96.3)	2,050(80.7)	2,350(92.5)	2,350(92.5)	2,445(96.3)	2,200(86.6)
4,100(9,039)	4,650(10,251)	7,100(15,653)	5,050(11,133)	5,050(11,133)	5,050(11,133)	6,550(14,440)
4,600(10,141)	5,300(11,684)	8,000(17,637)	5,650(12,456)	5,650(12,456)	5,650(12,456)	7,300(16,094)
6.50-14 8PR×4W	7.50-16 10PR×4W	—	7.50-16 10PR×4W	7.50-16 10PR×4W	7.50-16 10PR×4W	—

● Specifications are subject to change without notice.

BOX SERIES

■THE BOX SERIES IS DESIGNED FOR MOUNTING ON PICK - UP TRUCKS, AND FOR STOWING/ OPERATING IN CONFINED SPACES. DAILY MAINTENANCE CAN BE DONE FROM ONE SIDE.



PDS175S



PDS100S

BOX SERIES SPECIFICATION

Model		PDS55S -5c1	PDS75S -5c1	PDS100S -5c1	PDS130S -5c3
COMPRESSOR	Type	Rotary Twin Screw, Single-Stage, Oil-cooled			
	Free Air Delivery m³/min	1.56	2.1	2.8	3.7
	Rated Operating Pressure kg/cm²(PSIG)(kPa)	7(100)(690)	7(100)(690)	7(100)(690)	7(100)(690)
	Receiver Tank Capacity m³(US gal)	0.017(4.5)	0.02(5.3)	0.02(5.3)	0.02(5.3)
	Air Outlets	20A(3/4")×1pc	20A(3/4")×2pcs	20A(3/4")×2pcs	20A(3/4")×2pcs
ENGINE	Make/Model	IHI SHIBAURA E673L-D	IHI SHIBAURA S753-D	IHI SHIBAURA S733L-D	YANMAR 3TNV88-BDHK
	Type	4 cycle, water cooled, swirl-chamber type			4 cycle, water cooled, direct injection type
	No. of Cylinder	3	3	3	3
	Total Displacement cc	761	954	1,131	1,642
	Rated Output ps(kW)/rpm	10.5(14)/3,200	20.7(15.2)/3,500	25.8(19)/3,500	26.5(19.5)/3,000
	Fuel Tank Capacity Liters(US gal)	18(4.8)	28(7.9)	28(7.9)	70(18.5)
DIMENSION & WEIGHT	Lubrication Oil Capacity Liters(US gal)	3.0(0.8)	4.5(1.2)	4.8(1.3)	6.7(1.8)
	Overall Length mm(inch)	1,420(55.9)	1,580(62.2)	1,580(62.2)	1,700(66.9)
	Overall Width mm(inch)	720(28.3)	750(29.5)	750(29.5)	890(35.0)
	Overall Height mm(inch)	820(32.3)	865(34.1)	865(34.1)	1,080(42.5)
	Weight(Dry) kg(lb)	325(716)	425(937)	435(959)	650(1,433)
	Weight(Wet) kg(lb)	350(772)	465(1,025)	475(1,047)	730(1,609)

● Specifications are subject to change without notice.



PDS265S



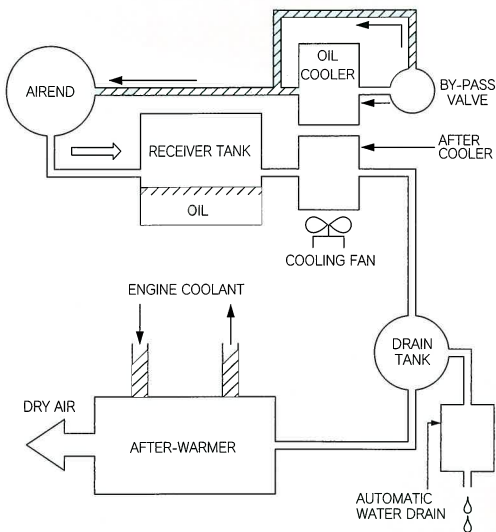
PDS390S

Model		PDS175S -5c3	PDS265S -5B2	PDS390S -5B1
COMPRESSOR	Type	Rotary Twin Screw, Single-Stage, Oil-cooled		
	Free Air Delivery m³/min	5.0	7.5	11.0
	Rated Operating Pressure kg/cm²(PSIG)(kPa)	7(100)(690)	7(100)(690)	7.1(102)(700)
	Receiver Tank Capacity m³(US gal)	0.02(5.3)	0.069(18.2)	0.098(25.9)
	Air Outlets	20A(3/4")×3pcs	20A(3/4")×4pcs 50A(2")×1pc	20A(3/4")×4pcs 50A(2")×1pc
ENGINE	Make/Model	YANMAR 4TNV88-BDHKS	YANMAR 4TNV98T-NHK	ISUZU DD-4BG1T
	Type	4 cycle, water cooled, direct injection type	4 cycle, water cooled, direct injection type w/turbo charger	
	No. of Cylinder	4	4	4
	Total Displacement cc	2,189	3,318	4,329
	Rated Output ps(kW)/rpm	47.5(34.9)/3,000	83.2(61.2)/2,500	110(80.9)/2,400
	Fuel Tank Capacity Liters(US gal)	90(23.8)	115(30.4)	182(48.1)
DIMENSION & WEIGHT	Lubrication Oil Capacity Liters(US gal)	7.4(2.0)	10.5(2.8)	13(3.4)
	Overall Length mm(inch)	1,970(77.6)	2,050(80.7)	2,600(102.4)
	Overall Width mm(inch)	950(37.4)	1,200(47.2)	1,300(51.2)
	Overall Height mm(inch)	1,080(42.5)	1,250(49.2)	1,400(55.1)
	Weight(Dry) kg(lb)	740(1,631)	1,150(2,535)	1,635(3,605)
	Weight(Wet) kg(lb)	840(1,852)	1,290(2,844)	1,850(4,079)

● Specifications are subject to change without notice.

DRY-AIR SERIES

■PDS-D SERIES IS EQUIPPED WITH A HIGH PERFORMANCE AFTER- WARMER TO ELIMINATE WATER VAPOR FROM THE COMPRESSED AIR. THIS SERIES IS SUITABLE FOR PAINTING, SAND-BLASTING, PIPE-CLEANING AND ANY JOB SITES WHERE DRY-AIR IS REQUIRED.



PDS655SD



PDS390SD



PDS655SD

DRY-AIR SERIES SPECIFICATIONS

Model	PDS75SC -5C1	PDS100SC -5C1	PDS130SC -5C3	PDS175SC -5C3	PDS265SC -5B2	PDS390SC -5B1	PDS265SD -5B1	PDS390SD -5B1	PDS655SD -4B2
Type	Rotary Twin Screw, Single-Stage, Oil-cooled								
Free Air Delivery m³/min	2.1	2.8	3.7	5.0	7.5	11.0	7.5	11.0	18.5
Rated Operating Pressure kg/cm²(PSIG)(kPa)	7(100)(690)	7(100)(690)	7(100)(690)	7(100)(690)	7(100)(690)	7.1(102)(700)	7(100)(690)	7.1(102)(700)	7.1(102)(700)
Receiver Tank Capacity m³(US gal)	0.02(5.3)	0.02(5.3)	0.02(5.3)	0.02(5.3)	0.069(18.2)	0.098(25.9)	0.069(18.2)	0.098(25.9)	0.189(5.0)
Discharge Air Temperature	Atmospheric Temperature +20°C				Atmospheric Temperature +40°C				
Air Outlets	20A(3/4")×2pcs	20A(3/4")×2pcs	20A(3/4")×2pcs	20A(3/4")×3pcs	20A(3/4")×4pcs 50A(2")×1pc	20A(3/4")×4pcs 50A(2")×1pc	20A(3/4")×4pcs 50A(2")×1pc	20A(3/4")×4pcs 50A(2")×1pc	20A(3/4")×2pcs 50A(2")×1pc
Make/Model	IHI SHIBURA S753-D	IHI SHIBURA S733L-D	YANMAR 3TNV88-BDHK	YANMAR 4TNV88-BDHS	YANMAR 4TNV98T-NHK	ISUZU DD-4BG1T	YANMAR 4TNV98T-NHK	ISUZU DD-4BG1T	HINO JO8C-V
Type	4 cycle, water cooled, swirl-chamber type		4 cycle, water cooled, Direct-injection		4 cycle, water cooled, Direct-injection, w/turbo charger				4 cycle, water-cooled, Direct-injection type
No. of Cylinder	3	3	3	4	4	4	4	4	6
Total Displacement cc	954	1,131	1,642	2,189	3,318	4,329	3,318	4,329	7,961
Rated Output ps(kW)/rpm	20.7(15.2)/3,500	25.8(19)/3,500	26.5(19.5)/3,000	47.5(34.9)/3,000	83.2(61.2)/2,500	110(80.9)/2,400	83.2(61.2)/2,500	110(80.9)/2,400	160(118)/2,500
Fuel Tank Capacity Liters(US gal)	28(7.9)	28(7.4)	70(18.5)	90(23.8)	115(30.4)	182(48.1)	115(30.4)	182(48.1)	270(71.3)
Lubrication Oil Capacity Liters(US gal)	4.5(1.2)	5.1(1.3)	6.7(1.8)	7.4(2.0)	10.5(2.8)	13(3.4)	10.5(2.8)	13(3.4)	23(6.1)
Overall Length mm(Inch)	1,500(62.2)	1,500(62.2)	1,700(66.9)	1,970(77.6)	2,050(80.7)	2,600(102.4)	2,050(80.7)	2,600(102.4)	3,650(143.7)
Overall Width mm(Inch)	750(29.5)	750(29.5)	890(35.0)	950(37.4)	1,200(47.2)	1,300(51.2)	1,200(47.2)	1,300(51.2)	1,685(66.3)
Overall Height mm(Inch)	865(34.1)	865(34.1)	1,080(42.5)	1,080(42.5)	1,250(49.2)	1,400(55.1)	1,250(49.2)	1,400(55.1)	2,070(81.5)
Weight(Dry) kg(lb)	435(959)	445(981)	640(1,411)	750(1,653)	1,180(2,601)	1,710(3,770)	1,215(2,679)	1,765(3,891)	3,120(6,878)
Weight(Wet) kg(lb)	475(1,047)	485(1,069)	720(1,587)	850(1,874)	1,320(2,910)	1,925(4,244)	1,350(2,976)	1,980(4,365)	3,460(8,025)
Tyre Size	6.50-14 8PR×2W								

C: with After Cooler D: with After Cooler and After Warmer

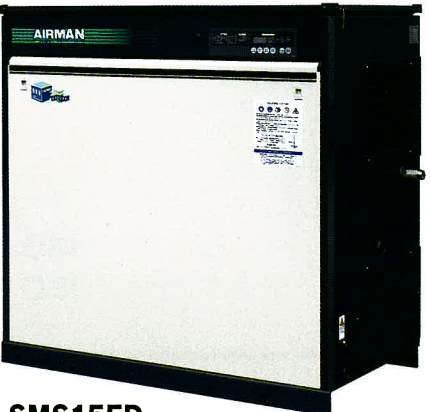
● Specifications are subject to change without notice.
● It is available for a trailer type for PDS265SC/SD and PDS390SC/SD.

ALL WEATHER SERIES

■AIRMAN SMS SERIES IS POWERWD BY AN ELECTRIC MOTOR AND SUITED FOR OUT-DOOR AND ALL-WEATHER CONDITIONS. WITH THREE-WIRES ELECTRIC POWER SUPPLY, COMPRESSED AIR BECOMES AVAILABLE AT ANY JOB SITE. THIS SERIES IS MOST USEFUL FOR LONG TERM CONSTRUCTION JOBS. OPTIONAL AIR-DRYER , ETC. ARE ALSO AVAILABLE.



SMS4ED



SMS15ED



SMS37SD



SMS75SD

ALL WEATHER SERIES SPECIFICATIONS

Model		SMS4ED -5A/6A	SMS8ED -5A/6A	SMS11ED -5A/6A	SMS15ED -5A/6A	SMS15SD -56/66	SMS22SD -58/68	SMS37SD -58/68	SMS55SD -58/68	SMS75SD -58/68	
COMPRESSOR	Type	Rotary Twin Screw, Single-Stage, Oil-cooled									
	Free Air Delivery m³/min	0.44	1.1	1.6	2.4	2.1	3.7	6.1	9.1	12.4	
	Rated Operating Pressure kg/cm²(PSIG)(kPa)	8.5(120)(830)			7(100)(690)	8.5(120)(830)	7(100)(690)		7(100)(690)		
	Unloader type	A.C.C.S. + purge unloader + auto-start/stop				Air intake closing type					
MOTOR	Receiver Tank Capacity m³(US gal)	0.0035(0.9)	0.0097(2.6)	0.016(4.2)	0.016(4.2)	0.016(4.2)	0.025(6.6)	0.032(8.4)	0.053(14.0)	0.069(18.2)	
	Output kW(HP)	3.7(5.0)	7.5(10)	11(14.8)	15(20.1)	15(21.2)	22(31.1)	37(52.3)	55(77.7)	75(106)	
	Frequency Hz	50/60									
	Voltage V	200/200 or 380 or 400/440									
DIMENSION & WEIGHT	No. of pole P	2	4							2	
	Starting system	Direct					Star-Delta				
	Cooling system	Air-cooled									
	Overall Width mm(inch)	860(33.9)	1,070(42.1)	1,320(52.0)	1,320(52.0)	1,475(58.1)	1,860(73.2)	2,080(81.9)	2,390(94.1)	2,665(104.9)	
	Overall Depth mm(inch)	560(22.0)	670(26.4)	700(27.6)	700(27.6)	810(31.9)	840(33.1)	980(38.6)	1,150(45.3)	1,150(45.3)	
	Overall Height mm(inch)	780(30.7)	1,130(44.5)	1,240(48.8)	1,310(51.6)	1,100(43.3)	1,200(47.2)	1,380(54.3)	1,640(64.6)	1,640(64.6)	
Wet Weight kg(lbs)	165(364)	290(639)	400(882)	460(1,014)	510(1,124)	765(1,687)	1,060(2,337)	1,635(3,605)	1,930(4,255)		

● Specifications are subject to change without notice.